



# Lionfish Removal and Awareness Day

## 2020 Festival Vendor Application

May 16-17, 2020



Please complete all fields below.

Send all materials to: [Lionfish@MyFWC.com](mailto:Lionfish@MyFWC.com) by **April 24, 2020**.

Questions? Contact [Lionfish@MyFWC.com](mailto:Lionfish@MyFWC.com) or the Division of Marine Fisheries Management at (850) 487-0554

### Vendor Fee - \$100

All vendor information listed on [FWCReefRangers.com](http://FWCReefRangers.com)

Organization Name:			
Contact Name:		Primary Phone:	
Email:		Additional Phone or Cell:	
Booth Name (as you want to be listed on website):			
Website:			
Select the theme that best describes your organization	Conservation	Arts & Crafts	Diving
Briefly describe the products and/or activities featured at your booth:			

### Sponsors

If you are interested in sponsoring the Lionfish Removal and Awareness Day Festival and Emerald Coast Open Lionfish Tournament, visit [EmeraldCoastOpen.com](http://EmeraldCoastOpen.com) to view the 2020 Sponsor Information Packet and complete the registration form. Contact [sponsor@emeraldcoastopen.com](mailto:sponsor@emeraldcoastopen.com) with any questions.



# Lionfish Removal and Awareness Day



## 2020 Festival Vendor Application

May 16 - 17, 2020

### **Event Info**

The Lionfish Removal and Awareness Day festival will be open to the public from 10 a.m. to 5 p.m. Saturday, May 16 & Sunday, May 17 in Destin. The headquarters of the festival and Emerald Coast Open tournament will be hosted at AJ's Seafood and Oyster Bar, with the festival continuing along the HarborWalk Village. The map of the venue can be found at [FWCReefRangers.com](http://FWCReefRangers.com).

### **Set Up & Breakdown**

Vendor set up is Friday, May 15 from 1 to 6 p.m. and Saturday, May 16 from 7 to 9:30 a.m. Breakdown is Sunday, May 17 at 5 p.m. Additional information regarding set-up protocol and vendor assignments will be provided at a later date.

### **Parking**

Public parking lots are available just north of HarborWalk Village. Additional parking and traffic flow details will be provided at a later date. For more information, visit [FWCReefRangers.com](http://FWCReefRangers.com).

### **Security**

There will be overnight security at HarborWalk Village from 5 p.m. through 9 a.m. on May 15 and 16. We ask that you please breakdown your booth Sunday afternoon at 5 p.m. since security will not be provided on May 17. Although security is provided, the Florida Fish and Wildlife Conservation Commission is not responsible for lost or stolen items.

### **Equipment**

One 10'x10' tent will be provided to each vendor. Please bring your own tables, chairs and any other items you may need. Keep in mind that the event is located along Destin harbor and could be affected by strong winds or inclement weather. *Be prepared and bring equipment to weigh down your tents and other materials.*

### **Disruptive Activities**

Vendor shall not engage in any activity that is disruptive. Vendors that engage in disruptive activities will be subject to removal and/or forfeiture of their vendor registration fee.

### **Release of Liability**

Vendor hereby agrees to release, waive, and discharge the Florida Fish and Wildlife Conservation Commission, Fish and Wildlife Foundation of Florida and their employees, sponsors, volunteers and agents from all losses, damages, claims, costs, expenses and liabilities, including attorney fees, for injury to person or property arising in connection with my participation in Lionfish Awareness and Removal Day and Emerald Coast Open activities and use of facilities and equipment.

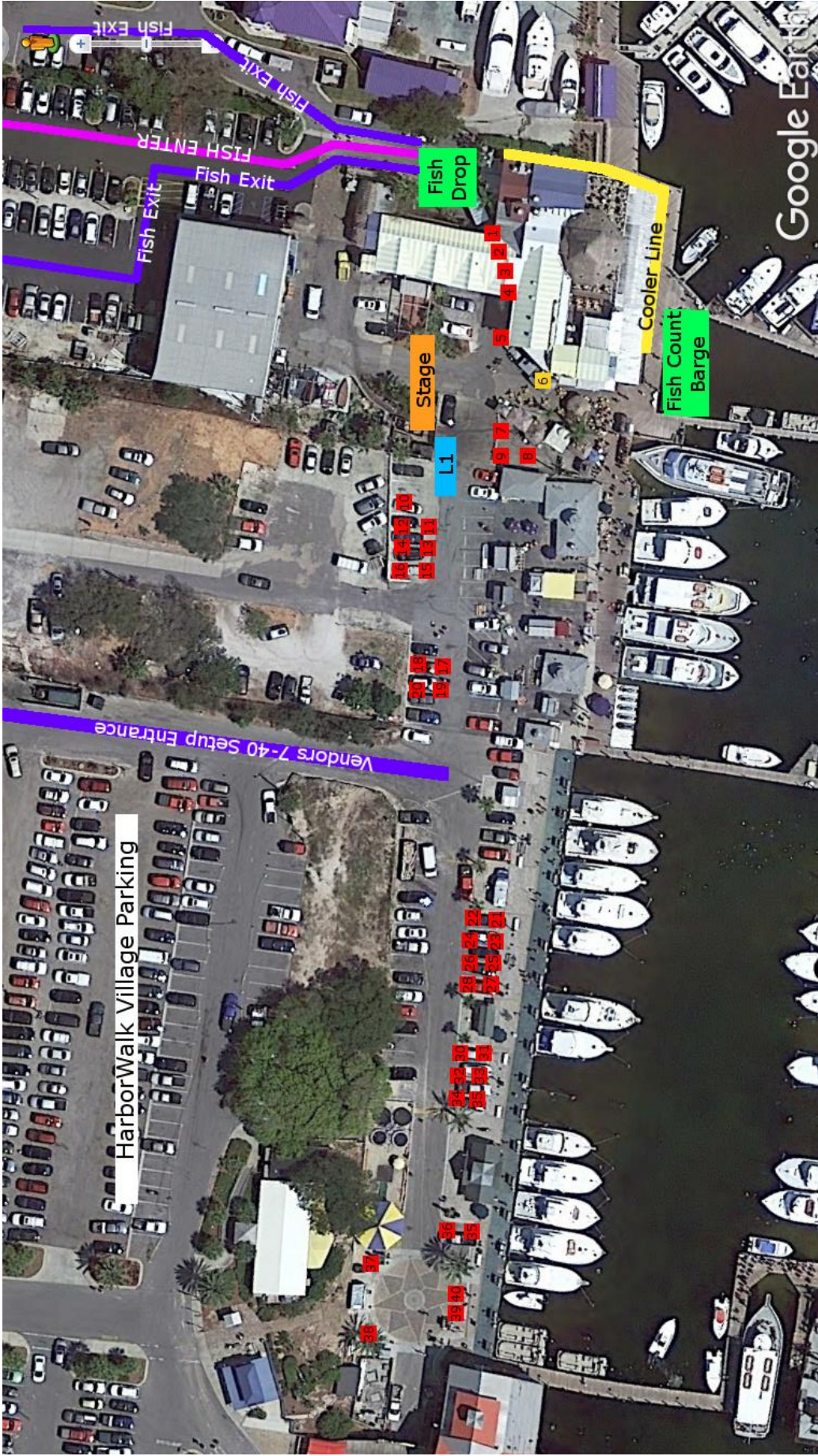
### **Payment**

Payment information will be provided to selected Vendors. Selections will be made by April 30, 2020.

I have read and agree to the terms and conditions above.

Signature: \_\_\_\_\_ Date: \_\_\_\_\_

Printed Name: \_\_\_\_\_



HarborWalk Village Parking

Vendors 7-40 Setup Entrance

Stage

L1

Fish Drop

Fish Count Barge

Cooler Line

Fish Exit

Fish Exit

Fish Exit

Fish Exit

Fish Exit

Fish Exit

Fish Exit

Fish Exit

Fish Exit

Fish Exit

Fish Exit

Fish Exit

Fish Exit

Fish Exit

Fish Exit

Fish Exit

Fish Exit

Fish Exit

Fish Exit

Fish Exit

Fish Exit

Fish ENTER

Google Earth

1

2

3

4

5

6

7

8

9

10

11

12

13

14

15

16

17

18

19

20

21

22

23

24

25

26

27

28

29

30

31

32

33

34

35

36

37

38

39

40

41

42

43

44

45

46

47

48

49

50

51

52

53

54

55

56

57

58

59

60

61

62

63

64

65

66

67

68

69

70

71

72

73

74

75

76

77

78

79

80

81

82

83

84

85

86

87

88

89

90

91

92

93

94

95

96

97

98

99

100

101

102

103

104

105

106

107

108

109

110

111

112

113

114

115

116

117

118

119

120

121

122

123

124

125

126

127

128

129

130

131

132

133

134

135

136

137

138

139

140

141

142

143

144

145

146

147

148

149

150

151

152

153

154

155

156

157

158

159

160

161

162

163

164

165

166

167

168

169

170

171

172

173

174

175

176

177

178

179

180

181

182

183

184

185

186

187

188

189

190

191

192

193

194

195

196

197

198

199

200

201

202

203

204

205

206

207

208

209

210

211

212

213

214

215

216

217

218

219

220

221

222

223

224

225

226

227

228

229

230

231

232

233

234

235

236

237

238

239

240

241

242

243

244

245

246

247

248

249

250

251

252

253

254

255

256

257

258

259

260

261

262

263

264

265

266

267

268

269

270

271

272

273

274

275

276

277

278

279

280

281

282

283

284

285

286

287

288

289

290

291

292

293

294

295

296

297

298

299

300